

2111 Pacific, Suite 100 Tacoma, Washington 98402

CHANGE ORDER

Project: Woodland High School Project No.: 1119.00-12
 Architect: McGranahan Architects Change Order No.: 1
 Contractor: Skanska USA Building, Inc. Date: January 9, 2014

Per the General Conditions of the Contract for Construction, this change order shall constitute full settlement for all known, estimated or foreseeable costs and time adjustments, including all delay and impact costs and direct and indirect damages, including consequential damages, regardless of cause, related to this change.

Plans and/or Specifications shall be changed as follows (refer to attachments for back-up information):

Reference	Amount
COP 001 Add Emergency Eyewash	\$2,264.00
COP 002 Change Elevator and Shaft	\$2,846.00

Total Change Order amount Add \$5,110.00

Original Contract Amount:	<u>\$45,538,000.00</u>	Original Date of Substantial Completion:	<u>July 6th, 2015</u>
Previously Authorized Change Orders:	<u>\$0.00</u>	Previously Authorized Change Orders:	<u></u>
Current Contract Amount:	<u>\$45,538,000.00</u>	Current Date of Substantial Completion:	<u></u>
Contract Amount will be:	<u>\$45,538,000.00</u>	The Contract Time Will be :	<u>Increased / Decreased / Unchanged</u>
Increased / Decreased / Unchanged			<u>by 0 Calendar Days.</u>
by this Change Order in the amount of:	<u>\$5,110.00</u>		
The Revised Contract Amount as a result of this Change Order therefor is:	<u>\$45,543,110.00</u>	The date of Substantial Completion as a result of this Change Order, therefore, is:	<u>July 6th, 2015</u>

APPROVALS:

 Architect: McGranahan Architects Date 1.9.14

Contractor: Skanska Date

Woodland Public Schools Date

SKANSKA

Change Order Request Form

Skanska With CE Breakdown

Authorization Request: 002 Date: 12/31/2013

To: Michael Green Woodland School District No. 404 800 Third Street Woodland, WA 98674	From: Trevor Wyckoff Skanska USA Building Inc. 222 SW Columbia Street, Suite 300 Portland, OR 97201
--	---

Description	Category	Status
COP#001 - Add Emergency Eyewash Room 1604	Owner	Submitted

Reference	Required By	Days Req	Amt Req
	1/7/2014	0	\$ ²⁰³⁴ 2,264

Notes: Bradley
 This Change Order Request is for the costs to supply and install ~~Haws~~ emergency eye wash in room 1604 in accordance with COP#001 dated December 18, 2013. Our subcontractor has quoted the ~~Haws~~ eyewash as required by the COP, however, this will not match the Bradley eyewash devices that the subcontractor will be providing elsewhere. If a Bradley model is desired to match others, this Change Order Request can be re-priced. *This pricing includes bradley eyewash, not Haws*

GE No.	Date	Reference	Amt Prop	Days Req	Category	Reason
--------	------	-----------	----------	----------	----------	--------

Description	Notes
0003 12/18/2013	\$ 4,854 0 Owner Architect/Consultant Directive
COP#001 - Add Emergency Eyewash Room 1604	Received COP#001 for the addition of an emergency eyewash at Room 1604 Central Custodial.

Item No	Item Description	Amt Prop	Reference
0001	Eagle Harbor to supply and install an additional emergency eye wash in room 1604 in accordance with COP#001.	\$ 2,806 2,136	
0002	Skanska Fee	\$ 228 128	

Approved By:

Signature _____

Name _____ Date _____

2111 Pacific, Suite 100 Tacoma, Washington 98402

CHANGE ORDER PROPOSAL: 001

Woodland High School

Date: December 18th, 2013

To: Skanska

PROPOSED CONTRACT MODIFICATION:

Please submit an itemized proposal for changes in the Contract Time and Contract Sum for the following proposed modifications to the Contract Documents (This document is not a Change Order, Field Authorization or direction to proceed with the work described herein):

- 1. Add an emergency eyewash at Central Custodial 1604.
- 2. The eyewash will drain into the adjacent mop sink.

Reference: M2.16; A2.16; A8.24

Attachments: MSK-065; ASK-096; ASK-097

PROPOSED CONTRACT ADJUSTMENTS:

The proposed change to the Contract Sum or Guaranteed Maximum Price for all work described above is:

- (increase) (decrease) of : \$ ~~4,834~~ 2,264 (Washington State Sales Tax not included) or,
- The Contract Sum shall remain unchanged.

The proposed change to the Contract Time for all work described above is:

- (increase) (decrease) of _____ days or;
- The Contract Time will remain unchanged.

The foregoing amount includes all direct and indirect costs for material, labor and supplies related to this change and to the effect of this change on the remainder of the Project. All other provisions of the Contract remain in full force and effect. The Contractor agrees to be bound by this proposal for ninety (90) days after this date. OK JW

Submitted by: [Signature]
General Contractor

Date: 1/2/14

We have examined the foregoing proposal, negotiated with the Contractor where necessary, and find it to be reasonable.

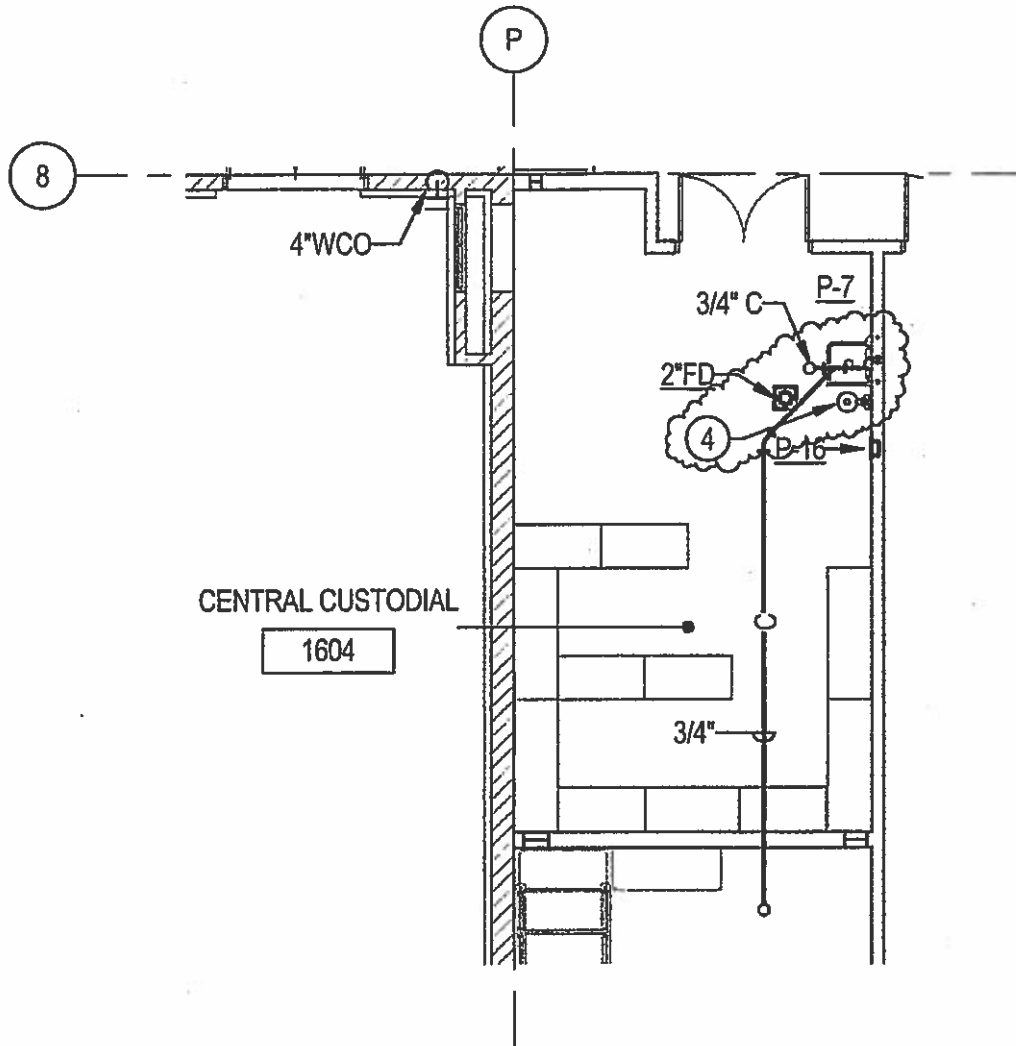
Approved By: _____
McGranahan Architects

Date: _____

The Owner hereby accepts the foregoing proposal. This document when fully signed constitutes the conditions upon which a Change Order will be issued.

Accepted By: _____
Woodland School District No. 404

Date: _____



LEVEL 1 - PLUMBING EYEWASH ADDITION

① 1/8" = 1'-0"

CONSTRUCTION NOTES

- 4 EMERGENCY EYEWASH, HAWS MODEL 7260B - 7270B. PROVIDE 1/2" HOT AND COLD WATER CONNECTION AND DRAIN EYEWASH INTO MOP SINK WITH 6" AIR GAP. PROVIDE WITH OPTIONAL TEMPERED WATER BLENDING SYSTEM MODEL TWBS.EWE. PROVIDE 1' X 1' WALL MOUNTED PANEL ABOVE EYEWASH TO ACCESS THERMOSTATIC MIXING VALVE. RELOCATE MOP SINK (P-7) 1' - 10" NORTH AS INDICATED.

WOODLAND HIGH SCHOOL

1119.000

McGRANAHAN architects

TITLE: EYE WASH ADDITION

REFERENCE: 1 / M2.16

SCALE: 1/8" = 1'-0"

ISSUED FOR: COP - 1

DATE: 12/04/13

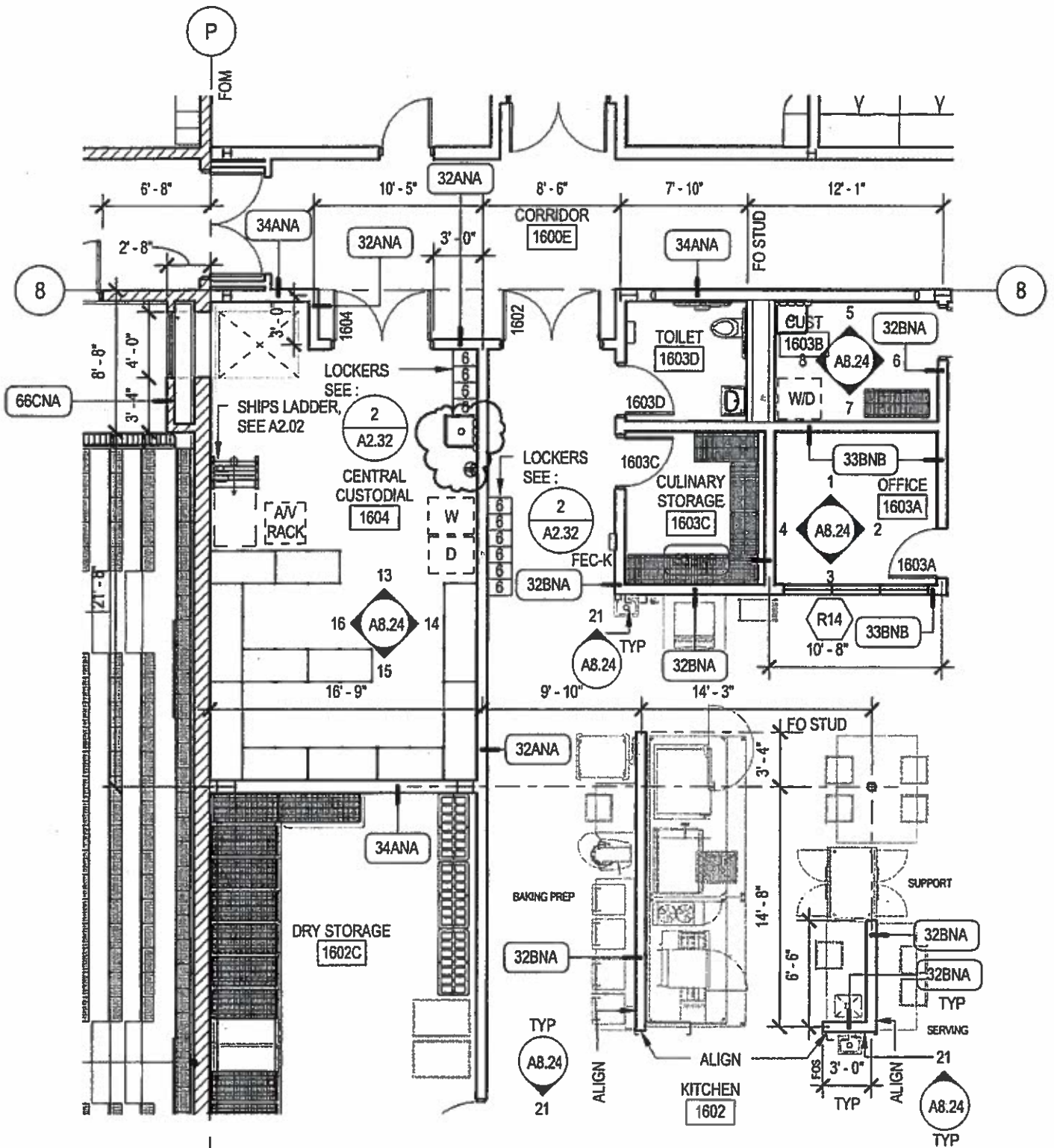
MSK - 065

REVISED: 12/04/13

DRAWN BY: BC

253
F 383 3097

253
T 383 3084



WOODLAND HIGH SCHOOL

1119.000

McGRANAHAN architects

TITLE: PARTIAL FIRST FLOOR PLAN - GYMNASIUM SOUTH

REFERENCE: A2.16

SCALE: 1/8" = 1'-0"

ISSUED FOR: COP-001

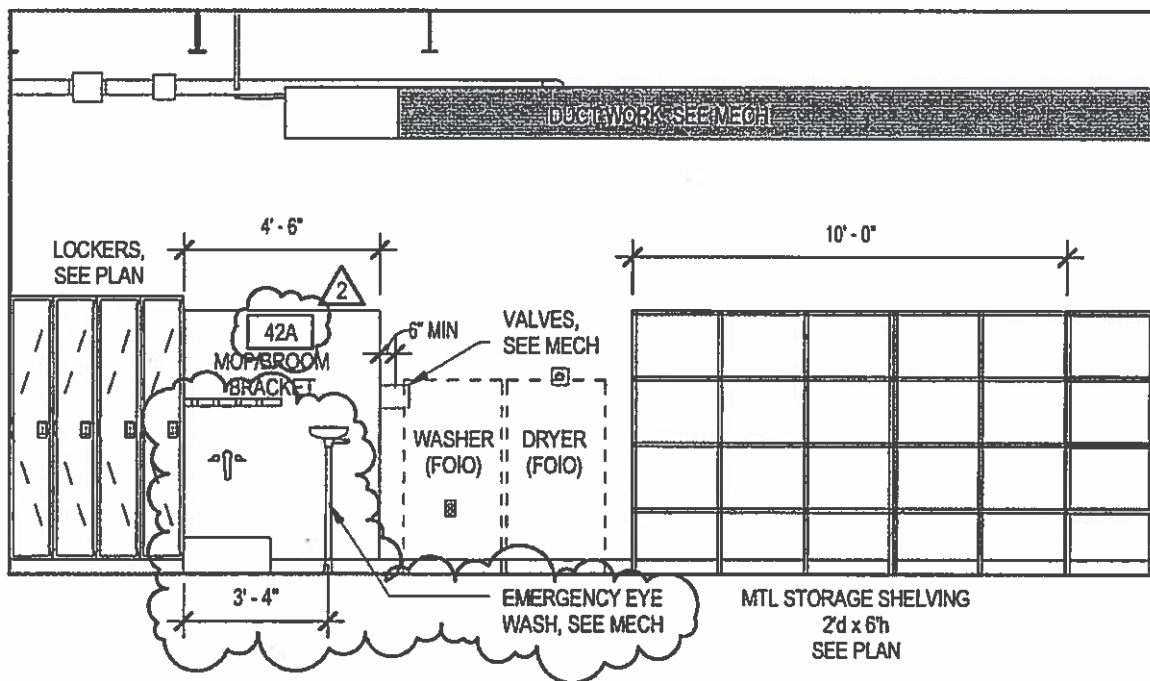
DATE: 12.06.13

ASK-096

REVISED: DKS

DRAWN BY: MFR

253
F 383 3097
253
T 383 3084



14

WOODLAND HIGH SCHOOL

1119.000

McGRANAHAN architects

TITLE: INTERIOR ELEVATION - CUSTODIAL 1604

REFERENCE: 14 / A8.24

SCALE: 1/4" = 1'-0"

ISSUED FOR: COP-001

DATE: 12.06.13

ASK-097

REVISED: DKS

DRAWN BY: MFR

253
F 383 3097
253
T 383 3084

Eagle Harbor Associates LLC

PAGE #1

CHANGE ORDER PROPOSAL # EH-01 DATE 12/20/13 REVISION #
 CHANGE ORDER - RFI - ASI - EWO # COP-001 PROJECT - Woodland High School JOB # 1304
 DESCRIPTION Add Emergency Eyewash Room 1604
 LOCATION HAWS

LABOR -

description	rate	hour	=	subtotal	TOTAL
a. plumber/fitter, s.t.	\$62.57	0	=	\$0.00	
b. plumber/fitter, s.t. Foreman	\$66.76	10.5	=	\$700.98	
c. plumber/fitter, o.t.	\$93.85	0	=	\$0.00	
d. plumber/fitter, o.t. Foreman	\$100.14	0	=	\$0.00	
e. as-builts	\$66.76	1	=	\$66.76	
f. cordination	\$66.76	0	=	\$0.00	
g. Driver		0	=	\$0.00	
0 total hours		0			
subtotal labor				\$767.74	\$767.74
ALLOWANCE FOR LABOR BURDEN @ 18.00%					\$138.19
(includes labor tax, industrial insurance, employment insurance, payroll portion of general liability.)					
SUB-TOTAL LABOR					\$905.93
ALLOWANCE FOR SAFETY @ 0.00%					\$0.00
ALLOWANCE FOR SMALL TOOLS @ 0.00%					\$0.00
TOTAL LABOR					\$905.93

MATERIAL - PAGE #2, MATERIAL BREAKDOWN BALANCE FORWARD

balance forward	=	\$2,345.00	
subtotal material		\$2,345.00	\$2,345.00
ALLOWANCE FOR FRT. & HDLG. ON MAT. @ 0.00%			\$0.00
TOTAL MATERIAL			\$2,345.00

EQUIPMENT -

description	duration	rate	unit	=		
a.	0			=	\$0.00	
b.				=	\$0.00	
c.				=	\$0.00	
TOTAL EQUIPMENT					\$0.00	\$0.00

SUBTOTAL EAGLE HARBOR ASSOCIATES DIRECT COSTS

OVERHEAD ON EHA WORK @ 15.00%		\$3,250.93	\$487.64
TOTAL Eagle Harbor Associates LLC PORTION			\$3,738.57

SUBCONTRACTOR WORK -

a.				=	\$0.00	
b.				=	\$0.00	
c.				=	\$0.00	
0 subtotal subcontractor --					\$0.00	\$0.00
EHA, OVERHEAD/PROFIT - SUBCONTRACT WORK - 12.00%						\$0.00
TOTAL SUBCONTRACTOR						\$0.00

Insurance @ 0.8% \$29.91
 Bond Premium @ 1% \$37.39

TIME EXTENSION IN CALENDAR DAY'S

REMARKS -	0	TOTAL DUE THIS PROPOSAL	\$3,805.87
a. EXCLUSIONS PER SUBCONTRACT			
b.			
c.			

CHANGE ORDER PROPOSAL # EH-01 0 DATE 12/20/13 REVISION # 0
 CHANGE ORDER - RFI - ASI - EWO # COP-001 0 PROJECT- Woodland High School JOB # 1303
 DESCRIPTION Add Emergency Eyewash Room 1604
 LOCATION HAWS

MATERIAL -

description	quantity	cost / unit	unit	=	subtotal
a. Haws Emergency Eye Wash	1	\$285.00	ea	=	\$285.00
b. Haws mixing valve	1	\$1,735.00	ea	=	\$1,735.00
c. Access panel	1	\$150.00	ea	=	\$150.00
d. 1/2" Type L copper	25	\$2.00	lf	=	\$50.00
e. 1/2" fittings	16	\$2.00	ea	=	\$32.00
f. 1/2 ball valves	3	\$15.00	ea	=	\$45.00
g. hangers	4	\$12.00	ea	=	\$48.00
h.	0	\$0.00	ea	=	\$0.00
i.	0	\$0.00	ea	=	\$0.00
j.	0	\$0.00	ea	=	\$0.00
k.	0	\$0.00	ea	=	\$0.00
l.	0	\$0.00	ea	=	\$0.00
m.	0	\$0.00	ea	=	\$0.00
n.		\$0.00	ea	=	\$0.00
o.		\$0.00	ea	=	\$0.00
p.		\$0.00	ea	=	\$0.00
q.		\$0.00	ea	=	\$0.00
r.		\$0.00	ea	=	\$0.00
s.		\$0.00	ea	=	\$0.00
t.		\$0.00	ea	=	\$0.00
u.		\$0.00	0	=	\$0.00
v. 0		\$0.00	0	=	\$0.00
w. 0		\$0.00	0	=	\$0.00
x. 0		\$0.00	0	=	\$0.00
y. 0		\$0.00	0	=	\$0.00
z. 0		\$0.00	0	=	\$0.00
aa. 0		\$0.00	0	=	\$0.00
bb. 0		\$0.00	0	=	\$0.00
cc. 0		\$0.00	0	=	\$0.00
dd. 0		\$0.00	0	=	\$0.00
ee. 0		\$0.00	0	=	\$0.00
ff. 0		\$0.00	0	=	\$0.00
gg. 0		\$0.00	0	=	\$0.00
hh. 0		\$0.00	0	=	\$0.00
ii. 0		\$0.00	0	=	\$0.00
jj. 0		\$0.00	0	=	\$0.00
kk. 0		\$0.00	0	=	\$0.00
ll. 0		\$0.00	0	=	\$0.00
mm. 0		\$0.00	0	=	\$0.00
nn. 0		\$0.00	0	=	\$0.00
oo. 0		\$0.00	0	=	\$0.00
pp. 0		\$0.00	0	=	\$0.00
qq. 0		\$0.00	0	=	\$0.00
rr. 0		\$0.00	0	=	\$0.00
ss. 0		\$0.00	0	=	\$0.00
tt. 0		\$0.00	0	=	\$0.00
uu. 0		\$0.00	0	=	\$0.00
vv. 0		\$0.00	0	=	\$0.00
ww. 0		\$0.00	0	=	\$0.00
xx. 0		\$0.00	0	=	\$0.00
yy. 0		\$0.00	0	=	\$0.00
zz. 0		\$0.00	0	=	\$0.00

SUBTOTAL MATERIAL - (balance carried forward to page #1) \$2,345.00

REMARKS -

a.

b.

c.

Eagle Harbor Associates LLC

PAGE #1

CHANGE ORDER PROPOSAL # EH-01.1 DATE 12/20/13 REVISION #
 CHANGE ORDER - RFI - ASI - EWO # COP-001 PROJECT - Woodland High School JOB # 1304
 DESCRIPTION Add Emergency Eyewash Room 1604
 LOCATION BRADLEY

LABOR -

description	rate	hour	=	subtotal	TOTAL
a. plumber/fitter, s.t.	\$62.57	0	=	\$0.00	
b. plumber/fitter, s.t. Foreman	\$66.76	10.5	=	\$700.98	
c. plumber/fitter, o.t.	\$93.85	0	=	\$0.00	
d. plumber/fitter, o.t. Foreman	\$100.14	0	=	\$0.00	
e. as-builts	\$66.76	1	=	\$66.76	
f. coordination	\$66.76	0	=	\$0.00	
g. Driver		0	=	\$0.00	
0 total hours		0			
subtotal labor				\$767.74	\$767.74

ALLOWANCE FOR LABOR BURDEN @ 18.00% \$138.19
 (includes labor tax, industrial insurance, employment insurance, payroll portion of general liability.)
 SUB-TOTAL LABOR \$905.93

ALLOWANCE FOR SAFETY @ 0.00% \$0.00

ALLOWANCE FOR SMALL TOOLS @ 0.00% \$0.00

TOTAL LABOR \$905.93

MATERIAL - PAGE #2, MATERIAL BREAKDOWN BALANCE FORWARD

balance forward \$919.00

subtotal material \$919.00 \$919.00

ALLOWANCE FOR FRT. & HDLG. ON MAT. 0.00% \$0.00

TOTAL MATERIAL \$919.00

EQUIPMENT -

description	duration	rate	unit	=	subtotal	TOTAL
a.	0			=	\$0.00	
b.				=	\$0.00	
c.				=	\$0.00	
TOTAL EQUIPMENT					\$0.00	\$0.00

SUBTOTAL EAGLE HARBOR ASSOCIATES DIRECT COSTS - \$1,824.93
 OVERHEAD ON EHA WORK @ 15.00% \$273.74

TOTAL Eagle Harbor Associates LLC PORTION \$2,098.67

SUBCONTRACTOR WORK -

a.				=		
b.				=	\$0.00	
c.				=	\$0.00	

0 subtotal subcontractor - \$0.00 \$0.00

EHA, OVERHEAD/PROFIT - SUBCONTRACT WORK - 12.00% \$0.00

TOTAL SUBCONTRACTOR \$0.00

Insurance @ 0.8% \$16.79

Bond Premium @ 1% \$20.99

TIME EXTENSION IN CALENDAR DAYS 0

REMARKS - TOTAL DUE THIS PROPOSAL \$2,136.45

a. EXCLUSIONS PER SUBCONTRACT
b.
c.

CHANGE ORDER PROPOSAL # **EH-01.1** 0 DATE **12/20/13** REVISION # **0**
CHANGE ORDER - RFI - ASI - EWO # **COP-001** 0 PROJECT **Woodland High School** JOB # **1303**
DESCRIPTION **Add Emergency Eyewash Room 1604**
LOCATION **BRADLEY**

MATERIAL -		quantity	cost / unit	unit	=	subtotal
a.	Bradley Emergency Eye Wash	1	\$195.00	ea	=	\$195.00
b.	Bradley mixing valve	1	\$399.00	ea	=	\$399.00
c.	Access panel	1	\$150.00	ea	=	\$150.00
d.	1/2" Type L copper	25	\$2.00	lf	=	\$50.00
e.	1/2" fittings	16	\$2.00	ea	=	\$32.00
f.	1/2 ball valves	3	\$15.00	ea	=	\$45.00
g.	hangers	4	\$12.00	ea	=	\$48.00
h.		0	\$0.00	ea	=	\$0.00
i.		0	\$0.00	ea	=	\$0.00
j.		0	\$0.00	ea	=	\$0.00
k.		0	\$0.00	ea	=	\$0.00
l.		0	\$0.00	ea	=	\$0.00
m.		0	\$0.00	ea	=	\$0.00
n.			\$0.00	ea	=	\$0.00
o.			\$0.00	ea	=	\$0.00
p.			\$0.00	ea	=	\$0.00
q.			\$0.00	ea	=	\$0.00
r.			\$0.00	ea	=	\$0.00
s.			\$0.00	ea	=	\$0.00
t.			\$0.00	ea	=	\$0.00
u.			\$0.00	0	=	\$0.00
v.	0		\$0.00	0	=	\$0.00
w.	0		\$0.00	0	=	\$0.00
x.	0		\$0.00	0	=	\$0.00
y.	0		\$0.00	0	=	\$0.00
z.	0		\$0.00	0	=	\$0.00
aa.	0		\$0.00	0	=	\$0.00
bb.	0		\$0.00	0	=	\$0.00
cc.	0		\$0.00	0	=	\$0.00
dd.	0		\$0.00	0	=	\$0.00
ee.	0		\$0.00	0	=	\$0.00
ff.	0		\$0.00	0	=	\$0.00
gg.	0		\$0.00	0	=	\$0.00
hh.	0		\$0.00	0	=	\$0.00
il.	0		\$0.00	0	=	\$0.00
jj.	0		\$0.00	0	=	\$0.00
kk.	0		\$0.00	0	=	\$0.00
ll.	0		\$0.00	0	=	\$0.00
mm.	0		\$0.00	0	=	\$0.00
nn.	0		\$0.00	0	=	\$0.00
oo.	0		\$0.00	0	=	\$0.00
pp.	0		\$0.00	0	=	\$0.00
qq.	0		\$0.00	0	=	\$0.00
rr.	0		\$0.00	0	=	\$0.00
ss.	0		\$0.00	0	=	\$0.00
tt.	0		\$0.00	0	=	\$0.00
uu.	0		\$0.00	0	=	\$0.00
vv.	0		\$0.00	0	=	\$0.00
ww.	0		\$0.00	0	=	\$0.00
xx.	0		\$0.00	0	=	\$0.00
yy.	0		\$0.00	0	=	\$0.00
zz.	0		\$0.00	0	=	\$0.00

SUBTOTAL MATERIAL - (balance carried forward to page #1) **\$919.00**

REMARKS -
a.
b.
c.



S19224 Series

Wall-Mount Halo™ Eyewash or Eye/Face Wash

- Halo™ Delivers the Most Effective Eye/Face Washdown Coverage and Spray Pattern
- Exceeds American National Standard Z358.1 Specifications
- Exceeds European EN 15154-1 & EN 15154-2
- Industry's Only Self-Draining Design – The Aquaduct™
- Separate Supply and Waste Pipes – Meets CEN and Plumbing Requirements
- Ergonomic Hand Activation Eyewash Paddle – Easy to Reach from Any Direction
- Barrier Free
- Fully-Assembled and Factory-Tested Eyewash or Eye/Face Wash with Hinged Dust Covers
- Yellow Transparent Plastic and Stainless Steel Bowl Covers Available
- Universal Identification Sign and Inspection Tag Included
- Classified by Underwriters Laboratories Inc. to ANSI Z358.1.
- Listed by Intertek to EN 15154-1 & EN 15154-2
- Halo is Covered by One or More of the Following Patents: D662,220; D662,219; D685,920. Other Patents Pending.

Specifications

Standard Eyewash or Eye/Face Wash Units save space and fit easily into any work environment. Halo eyewash or eye/face wash, operated by an ergonomic, highly visible push handle, provides effective wash down coverage and spray pattern. Integral strainer reduces debris in the water and also prevents clogging.

- This plumbing fixture is not intended to dispense water for human consumption through drinking or for preparation of food or beverages.

Pipe and Fittings

Piping to 1/2" NPT water supply inlet on unit. Piping to 1 1/4" NPT drain outlet for eyewash.

1 1/4" piping assembly manufactured of one of the following materials:

- Galvanized steel with BradTect® safety yellow coating
- Type 304 corrosion resistant stainless steel
- Type 316 corrosion-resistant stainless steel
- Chrome plated red brass.

Ball Valve

1/2" stay-open eye and eye/face wash valve manufactured of the following materials and supplied with either type 304 or 316 stainless steel pull rod and handle:

- Chrome-plated brass
- Type 316 stainless steel
- Self-closing chrome-plated brass (self closing eyewash valve may not meet local requirements for eyewash activation).

Eyewash

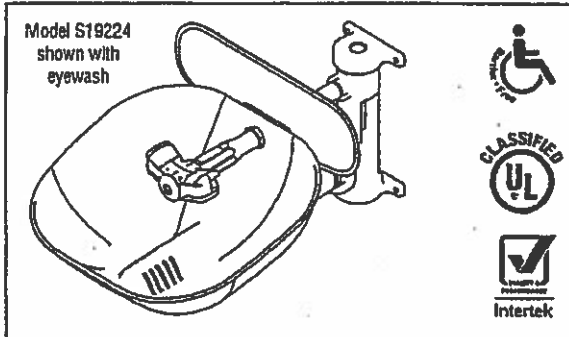
The Halo eyewash system offers a high performance rinsing platform that provides rapid relief to an individual's eyes that have been injured by chemicals or particulate. The eyewash includes an integral 5.1 GPM (19.2 L) flow control, providing water at a safe velocity while maintaining its effectiveness (exceeds minimum water flow of 0.4 GPM (1.5 L) at 30 PSI (2.0 bar)). Eyewash is protected by flip open dust covers that open when product is activated or by a full bowl dust cover that activates the unit when it is opened. Safe, steady water flow under varying water supply conditions from 30–90 PSI (2.0–6.1 bar) is assured by integral flow control in the sprayhead assembly.

Eye/Face Wash

The Halo eye/face wash system offers a high performance rinsing platform that provides rapid relief to an individual's eyes and face that have been injured by chemicals or particulate. This system provides the most complete face wash available in the market. The eye/face wash includes an integral 5.1 GPM (19.2 L) flow control, providing water at a safe velocity while maintaining its effectiveness (exceeds minimum water flow of 3.0 GPM (11.4 L) at 30 PSI (2.0 bar)). Eye/face wash is protected by flip open dust covers that open when product is activated or by a full bowl dust cover that activates the unit when it is opened. Safe, steady water flow under varying water supply conditions from 30–90 PSI (2.0–6.1 bar) is assured by integral flow control in the sprayhead assembly. Sprayheads are made from an impact resistant ABS plastic or from durable 304/316 stainless steel with electro-polished finish.

Emergency Fixtures
Document No. 4982

Page 1 of 4
This information is subject to change without notice.
10/22/2013



Bowl and Dust Cover

Bowl is constructed of yellow impact-resistant plastic, Type 304 corrosion-resistant stainless steel or Type 316 corrosion-resistant stainless steel. Optional dust cover is constructed of transparent yellow impact-resistant plastic, Type 304 corrosion-resistant stainless steel or Type 316 corrosion-resistant stainless steel.

Activation

Type 304 stainless steel push handle with optional aluminum or type 304 stainless steel foot pedal. Type 316 stainless steel push handle with optional Type 316 stainless steel foot pedal.

Drench Hose

Perforated sprayhead with protective sprayhead cover is ABS plastic and provides soft spray for cleansing eyes and face. Chrome-plated brass valve with extended handle stays open once handle is squeezed. 8" (2438mm) yellow reinforced thermoplastic hose has 1/2" NPT male thread. Burst strength is 450 PSI (31 bar). Attachment Kit includes 1/2" NPT supply, fittings and hanger for attaching hose to eyewashes. The sprayhead contains an antimicrobial agent to protect the sprayhead.

Backflow Prevention

Series N9 dual-check backflow preventer has a chrome-nickel plated brass body and includes atmospheric vent for continuous pressure applications. The check valve comes with 1/2" female dual NPT female inlet and outlet connections. It can sustain a maximum pressure of 125 PSI (8.6 bars). The check valve is certified to CSA B64.8.

Series 9D dual-check backflow preventer with intermediate atmospheric vent can be used under continuous pressure. The primary check valve uses a rubber disc sealing adjacent to a mating rubber part to ensure tight closing. A second check valve employs a rubber disc-to-metal seating.

Wall Bracket

Heavy-gauge sand cast aluminum protected with BradTect safety yellow coating. Includes three clearance holes for mounting bracket onto wall (mounting hardware not included).

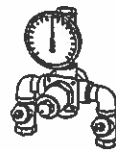
Waste

1 1/4" drain fitting and tailpiece furnished.

Recommended Option:

Navigator S19-2000 EFX8
Emergency Thermostatic Mixing Valve

NAVIGATOR



Satisfies ANSI Z358.1
tepid water requirements.

Halo
EYE/FACEWASH

© 2013 Bradley
P.O. Box 309, Menomonie Falls, WI 53052-0309
Phone: 800.BRADLEY (800.272.3539) Fax: 262.251.5817
bradleycorp.com



S19224 Series

Wall-Mount Halo™ Eyewash or Eye/Face Wash

Halo Pre-Configured Models

Halo Model Number	Description
Eyewashes	
<input checked="" type="checkbox"/> S19224EW	Halo Eyewash, plastic bowl
<input type="checkbox"/> S19224PT*	Halo Eyewash, plastic bowl, p-trap
<input type="checkbox"/> S19224B*	Halo Eyewash, stainless steel bowl
<input type="checkbox"/> S19224BPT*	Halo Eyewash, stainless steel bowl, p-trap
Eyewashes with Dust Cover	
<input type="checkbox"/> S19224PDC*	Halo Eyewash, plastic bowl w/ dust cover
<input type="checkbox"/> S19224DC*	Halo Eyewash, stainless steel bowl & hinged dust cover
<input type="checkbox"/> S19224DCPT*	Halo Eyewash, stainless steel bowl & hinged dust cover, p-trap
Eye-Face Washes	
<input type="checkbox"/> S19224FW*	Halo Eye/face wash, plastic bowl
<input type="checkbox"/> S19224FWPT*	Halo Eye/face wash, plastic bowl, p-trap
<input type="checkbox"/> S19224T*	Halo Eye/face wash, stainless steel bowl
<input type="checkbox"/> S19224P*	Halo Eye/face wash, stainless steel bowl w/ hose spray, tailpiece
<input type="checkbox"/> S19224TPT*	Halo Eye/face wash, stainless steel bowl, p-trap
<input type="checkbox"/> S19224Y*	Halo Eye/face wash, stainless steel bowl, hand/foot operated, tailpiece
Eye-Face Washes with Dust Covers	
<input type="checkbox"/> S19224PDCFW*	Halo Eye/face wash, plastic bowl w/ dust cover
<input type="checkbox"/> S19224DCFW*	Halo Eye/face wash, stainless steel bowl & hinged dust cover
<input type="checkbox"/> S19224DCRPT*	Halo Eye/face wash, stainless steel bowl & hinged dust cover, p-trap
All Stainless Steel Eye/Face Wash	
<input type="checkbox"/> S19224SC	Halo stainless steel eye/face wash, bowl and cover
<input type="checkbox"/> S19224SS	Halo stainless steel eye/face wash and bowl

* European models available. For European model number, add a Z to end of existing part number. For example, S19224EW will be S19224EWZ.



S19224 Series

Wall-Mount Halo™ Eyewash or Eye/Face Wash

Halo Configurator

Standard Selections (Must select one from each category)	
Configuration	
<input type="checkbox"/> 0	Standard Wall Mount
Pipe Material	
<input type="checkbox"/> A	NPT, Yellow BradTect Galvanized Steel
<input type="checkbox"/> B	NPT, All 304 Stainless Steel
<input type="checkbox"/> C	NPT, All 316 Stainless Steel
<input type="checkbox"/> D	NPT, Chrome-Plated
<input type="checkbox"/> F	BSP, Yellow BradTect Galvanized Steel ‡
<input type="checkbox"/> G	BSP, All 304 Stainless Steel ‡
<input type="checkbox"/> J	BSP, Chrome-Plated ‡
Ball Valve	
<input type="checkbox"/> 1	Stay-Open Eyewash, Chrome-Plated brass
<input type="checkbox"/> 2	Stay-Open Eyewash, 316 SS
Eyewash – Eye/Face Wash	
<input type="checkbox"/> A	Halo Eyewash
<input type="checkbox"/> B	Halo Eye/Face Wash
<input type="checkbox"/> D	Halo Eyewash, 304 SS Yoke
<input type="checkbox"/> E	Halo Eye/Face Wash, 304 SS Yoke
<input type="checkbox"/> F	304 SS Halo Eye/Face Wash, 304 SS Yoke
<input type="checkbox"/> G	Halo Eyewash, 316 SS Yoke
<input type="checkbox"/> H	Halo Eye/Face Wash, 316 SS Yoke
<input type="checkbox"/> J	316 SS Halo Eye/Face Wash, 316 SS Yoke

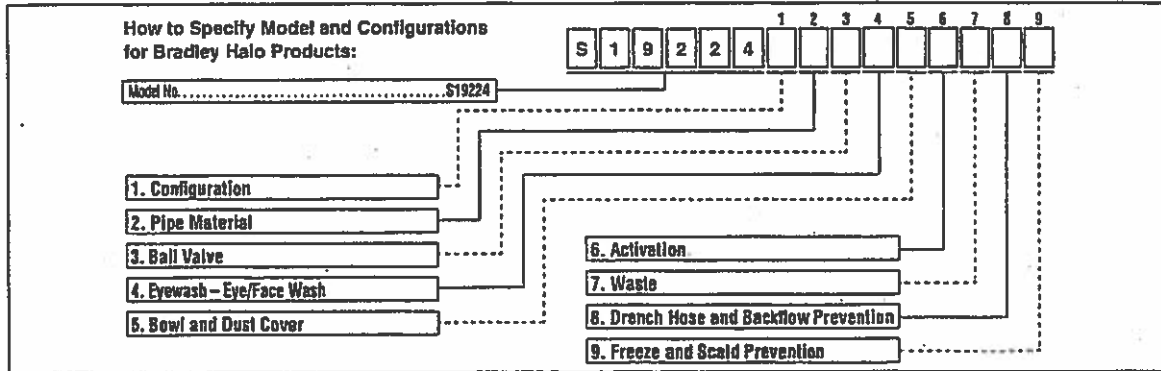
* Not available with barrier-free configurations.

‡ Not available in the U.S.

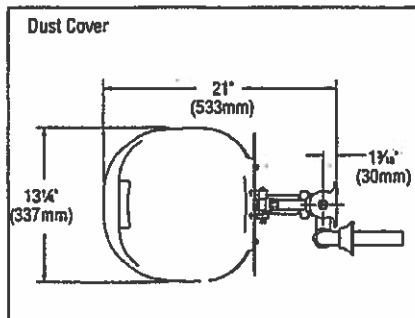
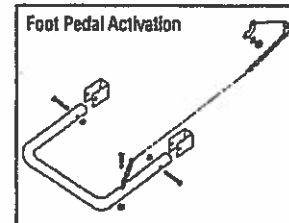
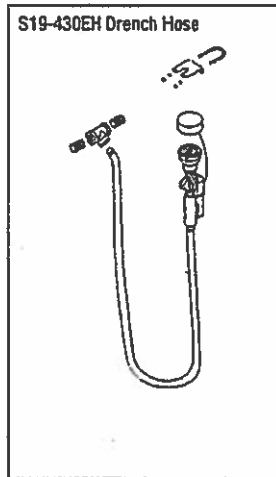
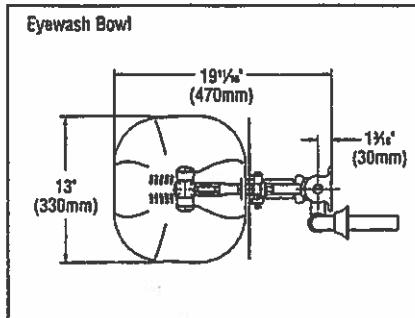
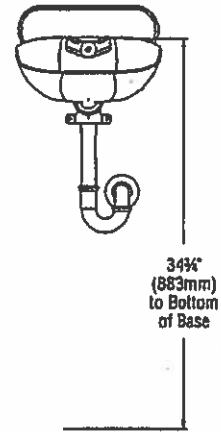
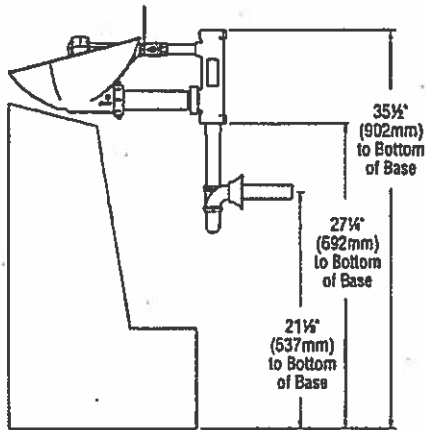
NPT = National Pipe Thread

BSP = British Standard Pipe Thread

Bowl and Dust Cover	
<input type="checkbox"/> A	Plastic Bowl, No Dust Cover
<input type="checkbox"/> B	Plastic Bowl, Plastic Dust Cover
<input type="checkbox"/> D	304 SS, No Dust Cover
<input type="checkbox"/> E	304 SS, 304 SS Dust Cover
<input type="checkbox"/> F	304 SS, Plastic Dust Cover
<input type="checkbox"/> G	316 SS, No Dust Cover
<input type="checkbox"/> H	316 SS, 316 SS Dust Cover
<input type="checkbox"/> J	316 SS, Plastic Dust Cover
<input type="checkbox"/> 0	No Bowl or Dust Cover
Activation	
<input type="checkbox"/> A	304 SS Handle
<input type="checkbox"/> B	316 SS Handle
<input type="checkbox"/> D	304 SS Handle with Stainless Steel Foot Pedal*
Waste	
<input type="checkbox"/> A	Tailpiece
<input type="checkbox"/> D	P-Trip
<input type="checkbox"/> 0	No Waste
Drench Hose and Backflow Prevention	
<input type="checkbox"/> A	Drench Hose Kit with Vacuum Breaker
<input type="checkbox"/> B	Drench Hose Kit with N9 Backflow Preventer
<input type="checkbox"/> C	Drench Hose Kit with 9D Backflow Preventer
<input type="checkbox"/> D	Drench Hose Kit without Backflow Preventer
<input type="checkbox"/> 0	No Drench Hose and No Backflow Prevention
Freeze and Scald Protection	
<input type="checkbox"/> H	Anti-Freeze Valve
<input type="checkbox"/> P	Anti-Scald Valve
<input type="checkbox"/> R	Anti-Freeze and Anti-Scald Valves
<input type="checkbox"/> 0	No Anti-Freeze Valve and No Anti-Scald Valve



S19224 shown with Eyewash and Plastic Bowl



All dimensions assume standard thread engagement. Variations in manufacturing allow for +/- 1/8" (3mm) per threaded joint. To find the tolerance of a dimension, add the number of thread joints across the length of the dimension and multiply it by 1/8" (3mm).



S19-2000, S192000EFX Emergency Fixture Thermostatic Mixing Valves

- Exceeds ANSI Z358.1
- ASSE 1071 Certified
- Reliable Liquid-Filled Thermostat with 10-Year Warranty
- Checkstops on Inlets
- Adjustable Set Point within Temperature Range
- Accurate Temperature Control to within $\pm 3^{\circ}\text{F}$
- Built-in Cold Water Bypass, Assuring Cold Flow
- Positive Shutoff of Hot Supply When Cold Supply is Lost
- Easy Installation and Serviceability
- Dirt and Lime Resistant
- Dial Thermometer
- Factory Assembled and Tested
- Universal Mounting Capability
- Cabinet Features:
 - 18 Gauge Body & Door
 - Left-Hand Hinge
 - Cylinder Lock
 - Inlet/Outlet Knock-Out Holes for Mounting Flexibility
 - Stainless Steel or Baked White Enamel Finishes
 - Surface-Mounted or Recessed Style with Flange

Valve Specifications

Maximum Operating Pressure
125 PSI (860 kPA)

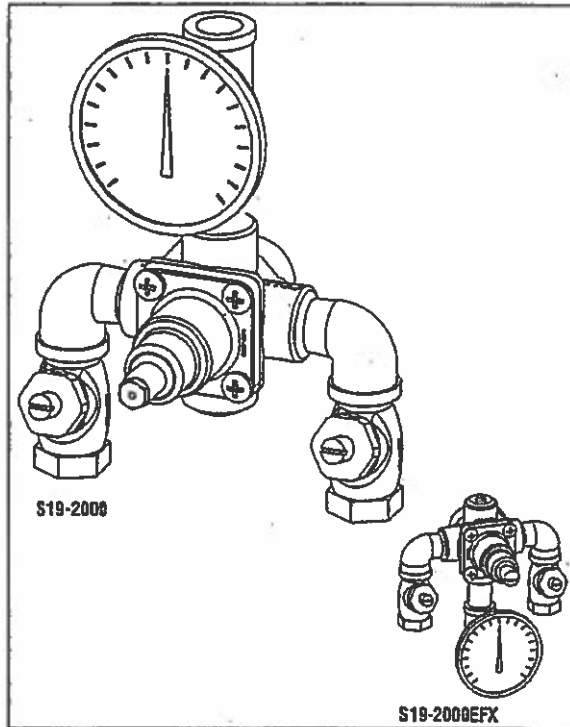
Maximum Inlet Temperature
180° F (82° C)

Recommended Inlet Temperature
120° F (49° C) – 140° F (60° C)

Temperature Range **Set Point**
Std. 65° F (18° C) to 90° F (32° C) 85° F (29° C)

Flow Capacities – GPM (L/Min)

Model	Min. Flow	Pressure Drop – PSI (Bar)						
		5 (.5)	10 (1.0)	15 (1.5)	20 (2.0)	30 (2.5)	45 (3.0)	60 (4.0)
S19-2000	1.5 (5.5)	3.0 (13.5)	4.0 (19.0)	5.0 (23.5)	6.0 (27.0)	7.3 (30.5)	9.0 (33.5)	10.5 (38.5)
Cold Bypass Only		2.3 (10.5)	3.2 (14.5)	4.0 (18.0)	4.6 (21.0)	5.6 (23.5)	6.8 (25.5)	7.7 (29.5)



Optional Selections

Finish

- C Chrome Plated

Cabinets

- SS Surface Mount Stainless Steel
 RS Recessed Stainless Steel
 SE Surface Mount White Enamel
 RE Recessed White Enamel
 W Plexi-glass Window in Door

Code Compliance and Certifications

ASSE 1071 & UPC certified.



Engineer's Approval _____

Plumbing Fixtures
Document No. 5890

Page 1 of 3
This information is subject to change without notice.
8/7/2012

© 2012 Bradley
P.O. Box 309, Menomonie Falls, WI 53052-0309
Phone: 800.BRADLEY(800.272.3539) Fax: 262.253.4161
bradleycorp.com

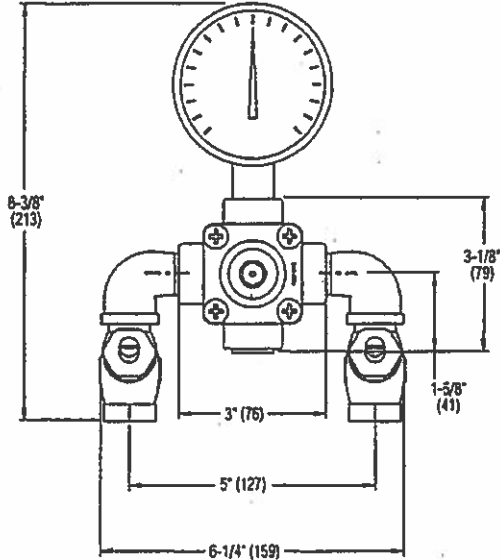


S19-2000, S19-2000EFX Emergency Fixture Thermostatic Mixing Valves

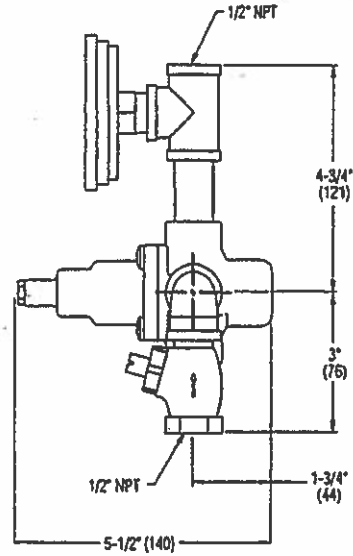
Dimensions

(mm)

Front View

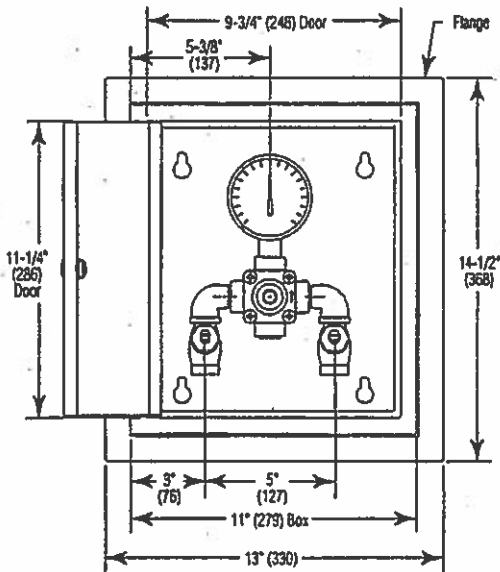


Side View

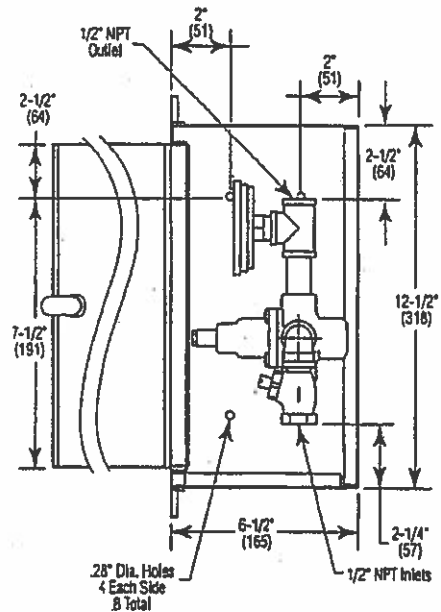


Dimensions — S19-2000 Recessed Cabinet

Front View



Side View



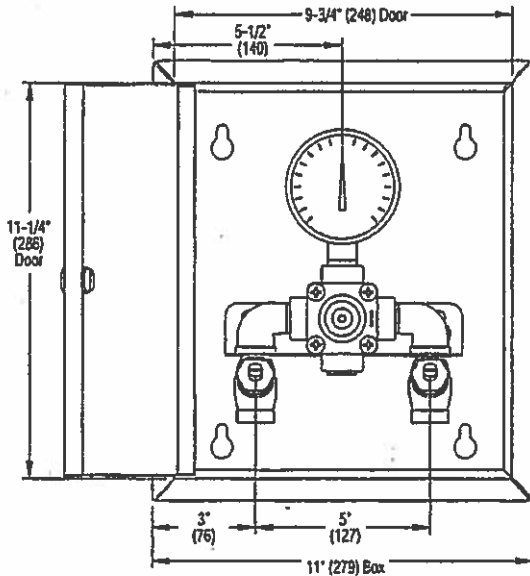


S19-2000, S192000EFX Emergency Fixture Thermostatic Mixing Valves

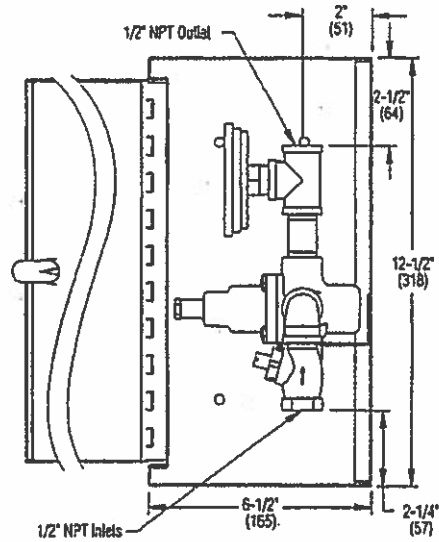
Dimensions — S19-2000 Surface-Mounted Cabinet

(mm)

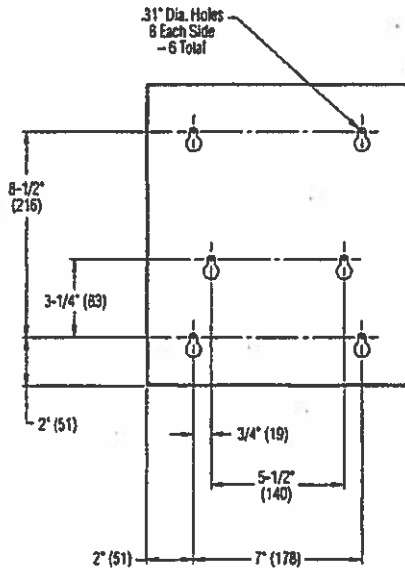
Front View



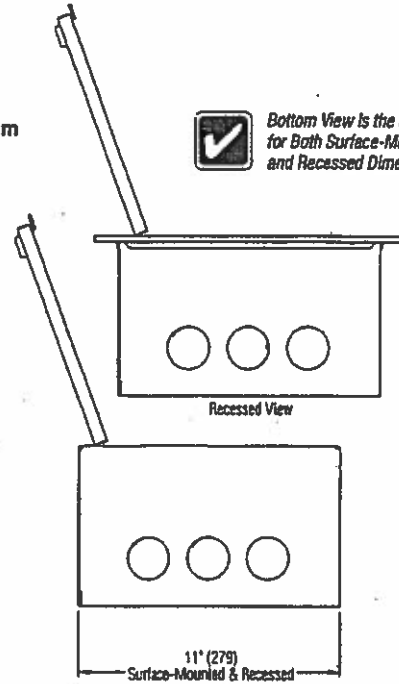
Side View



Back View



Bottom View



Bottom View is the Same
for Both Surface-Mounted
and Recessed Dimensions.



Change Order Request Form

Skanska With CE Breakdown

Change Order Request: 003

Date: 1/3/2014

To: Michael Green
Woodland School District No. 404
800 Third Street
Woodland, WA 98674

From: Trevor Wyckoff
Skanska USA Building Inc.
222 SW Columbia Street, Suite 300
Portland, OR 97201

Description	Category	Status
COP#002R1- Elevator and Shaft Revision		Submitted

Reference	Required By	Days Req	Amt Req
	1/10/2014	0	\$ 2,846

Notes

This Change Order Request is for the costs to provide a 3,000lb elevator in lieu of 3,500lb and modify shaft framing in accordance with COP#002R1 dated December 20, 2013. Due to the need to excavate for and provide rebar for the elevator pit, we need direction by the 10th of January. If direction cannot be provided by the 10th, Skanska will need to reprice.

CE No	Date	Reference	Amt Prop	Days Req	Category	Reason
0004	12/19/2013		\$ 2,846	0	Owner	Architect/Consultant Directive
COP#002R1- Elevator and Shaft Revision		COP#00R12 provided by McGranahan for revising the elevator and elevator shaft construction.				
Item No	Item Description		Amt Prop	Reference		
0001	Otis Elevator shall provide 3,000lb capacity elevator in (\$ accordance with COP#002R1 dated December 20, 2013.		1,077			
0002	Western Partitions shall complete all framing and drywall revisions in accordance with COP#002R1 dated December 20, 2013.		\$ 3,735			
0003	Subguard Subcontractor Default		\$ 27			
0004	Skanska Fee		\$ 161			

Approved By:

Signature _____

Name _____

Date _____

2111 Pacific, Suite 100 Tacoma, Washington 98402

CHANGE ORDER PROPOSAL: 002R1

Woodland High School

Date: December 20th, 2013

To: Skanska

PROPOSED CONTRACT MODIFICATION:

Please submit an itemized proposal for changes in the Contract Time and Contract Sum for the following proposed modifications to the Contract Documents (This document is not a Change Order, Field Authorization or direction to proceed with the work described herein):

- 1. Change the elevator capacity from 3,500 lbs to 3,000 lbs.
- 2. Change the elevator shaft wall type from 50A1B to 34A1B.
- 2. Change the framing at the elevator jambs per the attached sketches.

Reference: A2.11; A2.21; A7.21; S2.11; Section 14 20 10

Attachments: ASK-098, ASK-0 99, ASK-100, ASK-101, ASK-102, ASK-103, ASK-104 and SSK-045

PROPOSED CONTRACT ADJUSTMENTS:

The proposed change to the Contract Sum or Guaranteed Maximum Price for all work described above is:

- (increase) (decrease) of : \$ 2,846 (Washington State Sales Tax not included) or,
- The Contract Sum shall remain unchanged.

The proposed change to the Contract Time for all work described above is:

- (increase) (decrease) of _____ days or;
- The Contract Time will remain unchanged.

The foregoing amount includes all direct and indirect costs for material, labor and supplies related to this change and to the effect of this change on the remainder of the Project. All other provisions of the Contract remain in full force and effect. The Contractor agrees to be bound by this proposal for ~~ninety (90)~~ ^{seven (7)} days after this date.

Submitted by: [Signature]
General Contractor

Date: 1/7/2014

We have examined the foregoing proposal, negotiated with the Contractor where necessary, and find it to be reasonable.

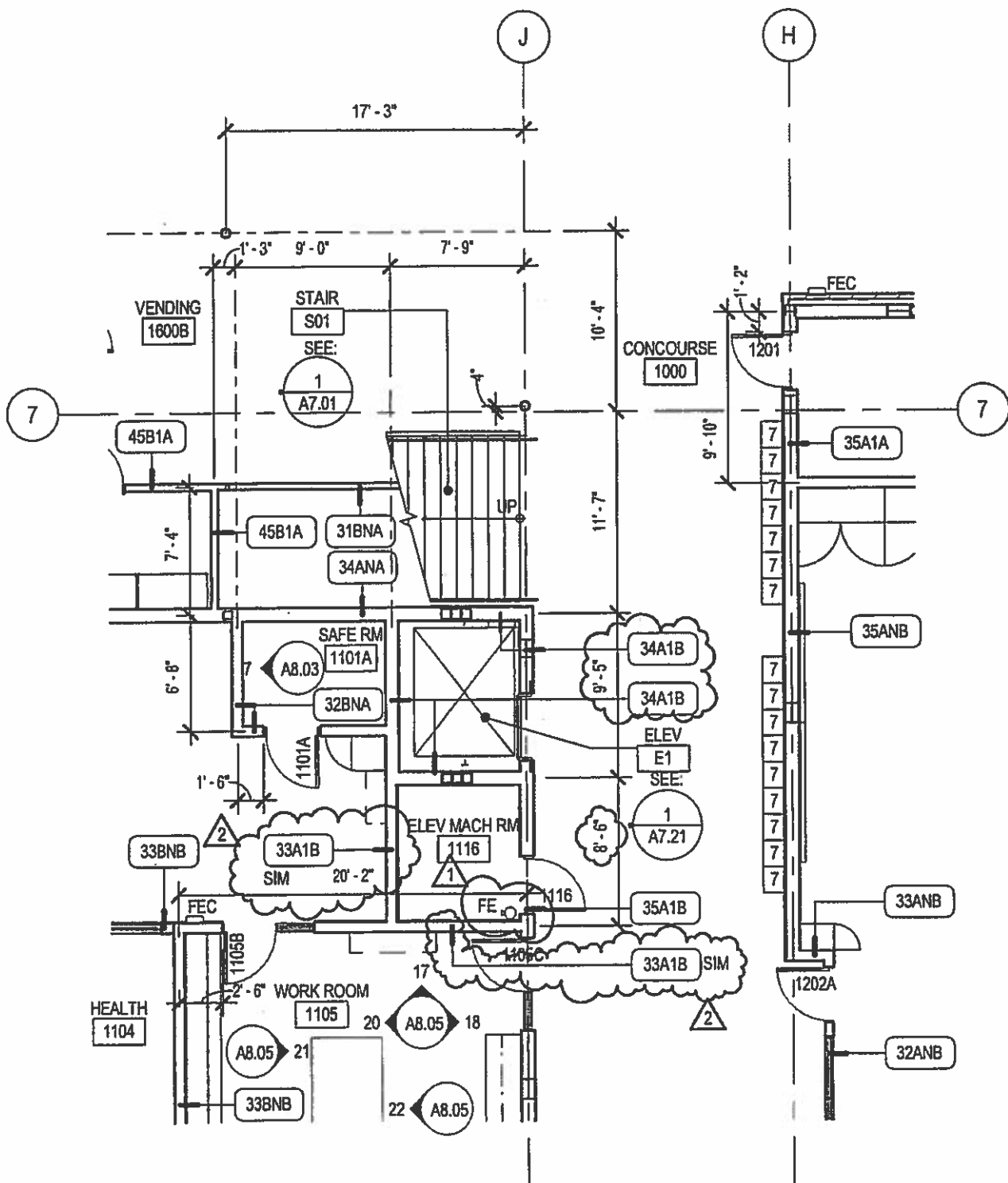
Approved By: _____
McGranahan Architects

Date: _____

The Owner hereby accepts the foregoing proposal. This document when fully signed constitutes the conditions upon which a Change Order will be issued.

Accepted By: _____
Woodland School District No. 404

Date: _____



WOODLAND HIGH SCHOOL

1119.000

McGRANAHAN architects

TITLE: PARTIAL FIRST FLOOR PLAN - CLASSROOM WING SOUTH

REFERENCE: A2.11

SCALE: 1/8" = 1'-0"

ISSUED FOR: COP-002

DATE: 12.18.13

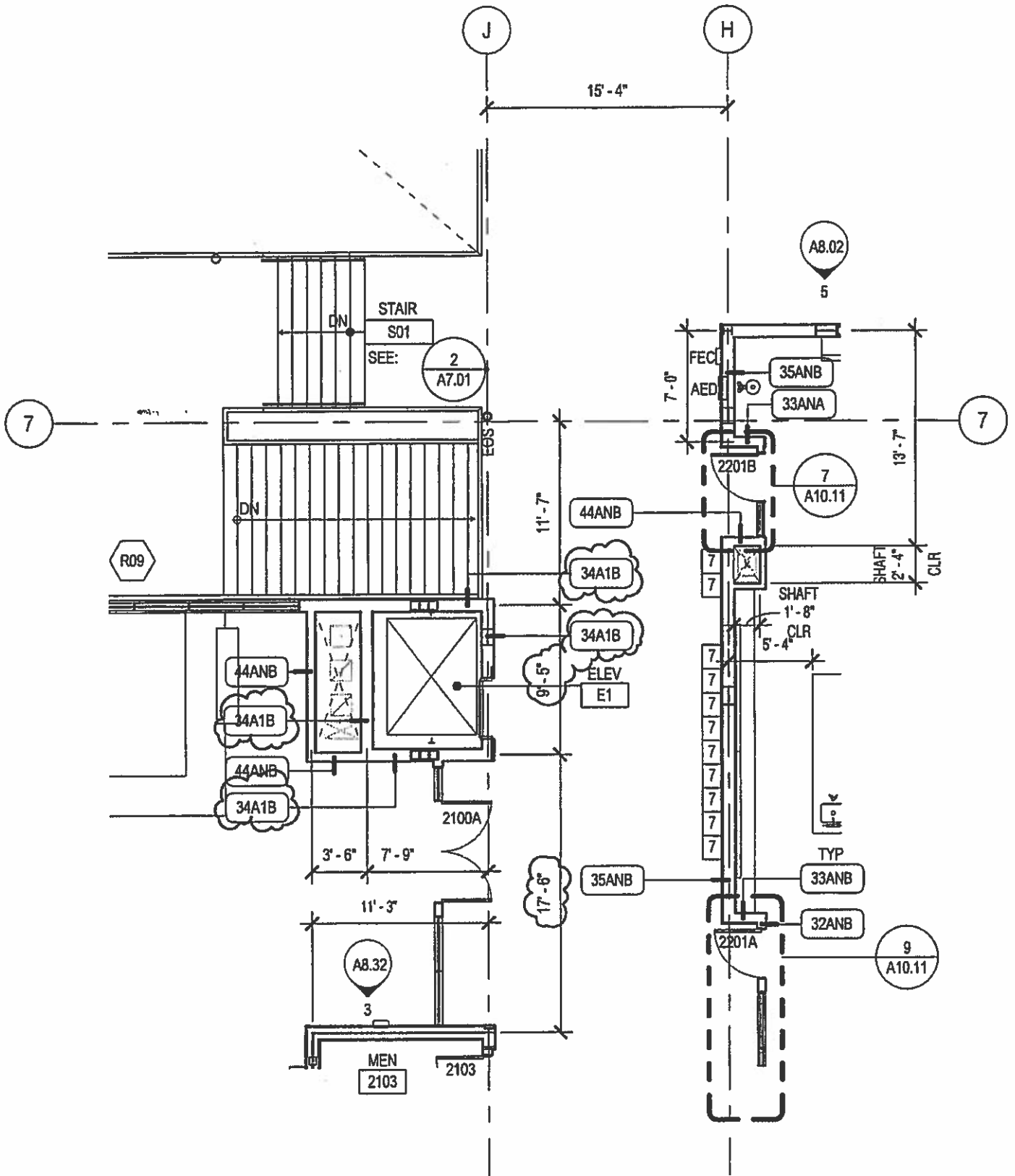
ASK-098

REVISED: DKS

DRAWN BY: MJR

F 253
303 3097

T 253
303 3084



WOODLAND HIGH SCHOOL

1119.000

McGRANAHAN architects

TITLE: PARTIAL SECOND FLOOR PLAN

REFERENCE: A2.21

SCALE: 1/8" = 1'-0"

ISSUED FOR: COP-002

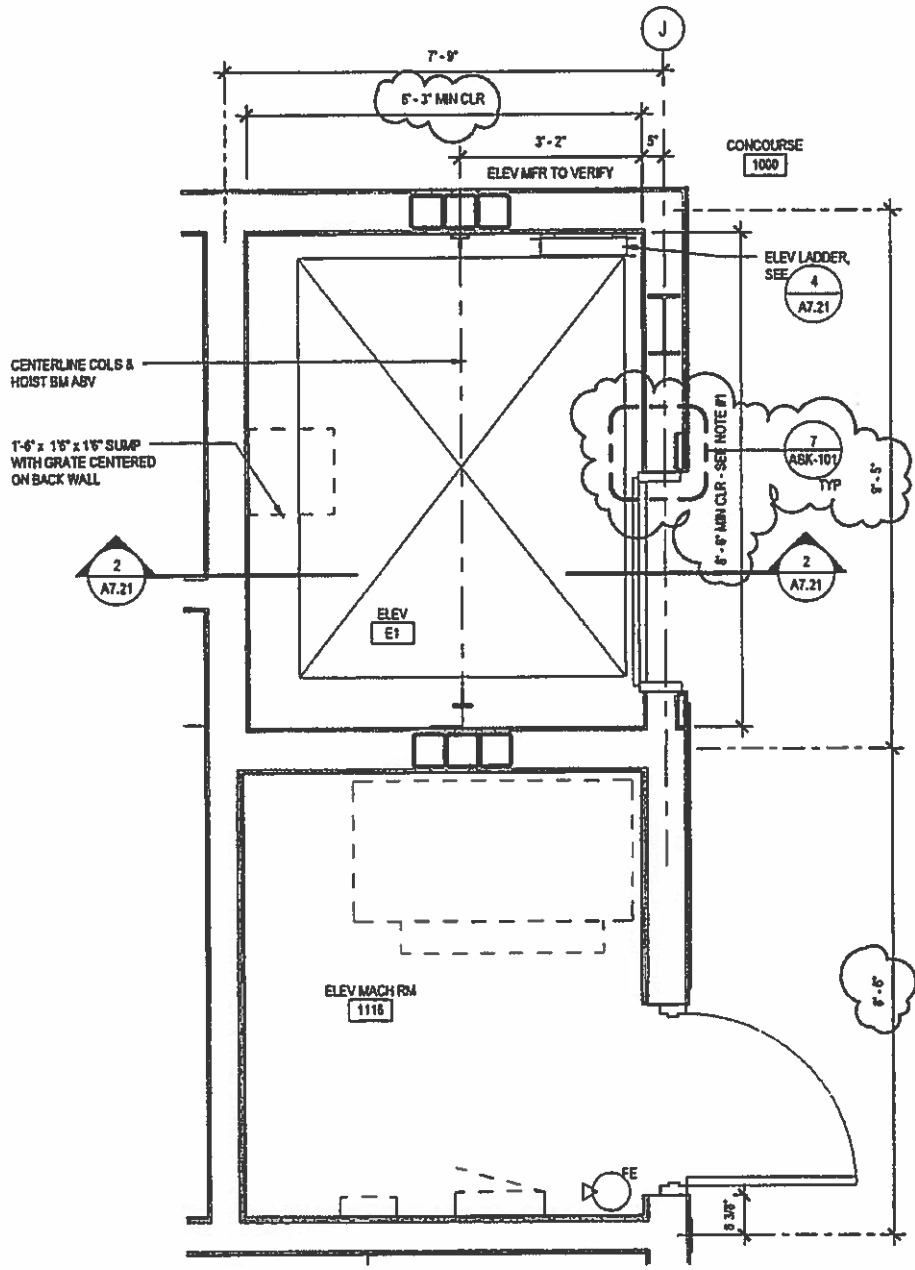
DATE: 12.18.13

ASK-099

REVISED: DKS

DRAWN BY: MJR

253
F 383 3097
253
T 383 3084



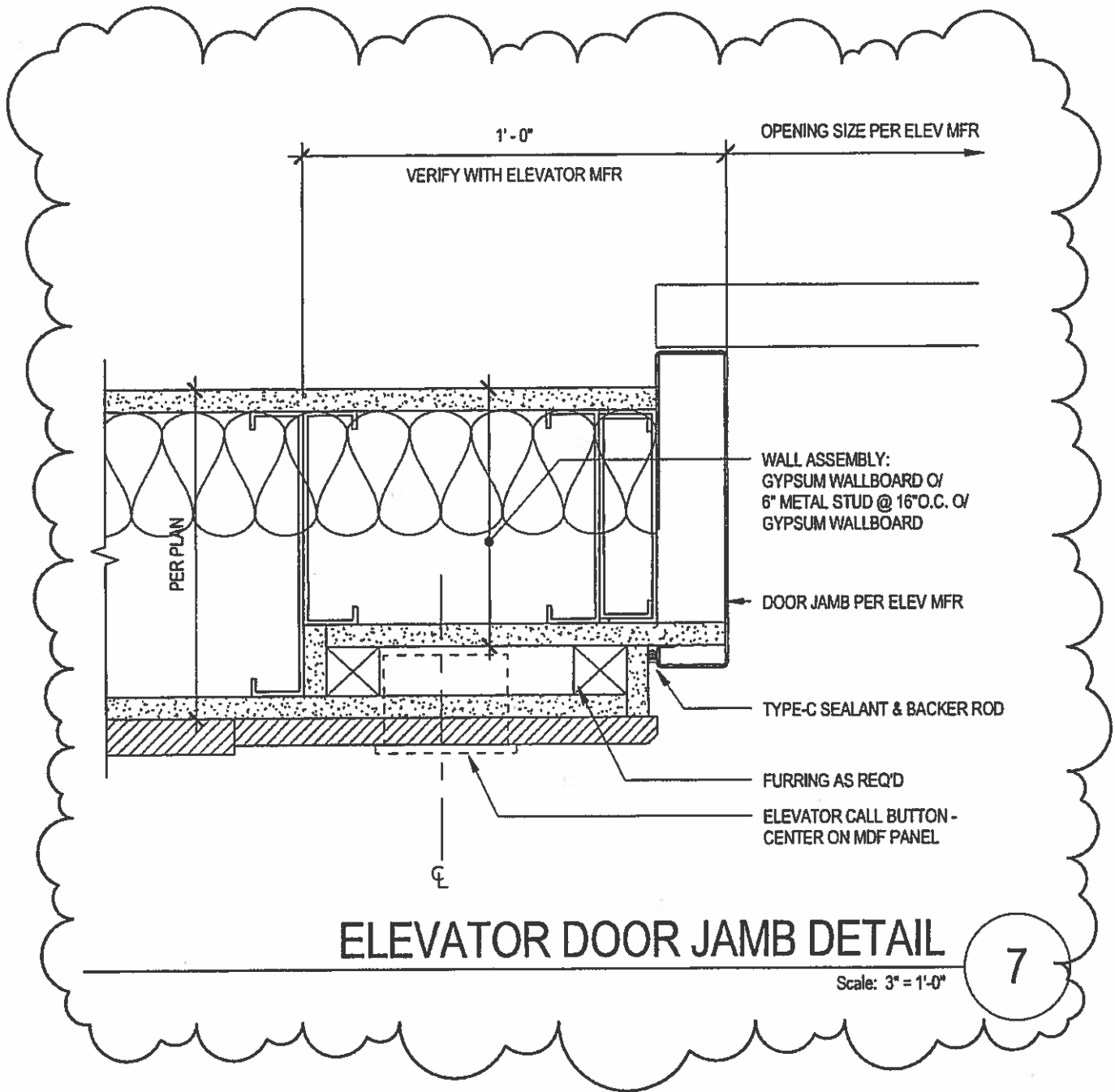
WOODLAND HIGH SCHOOL

1119.000 McGRANAHAN ARCHITECTS

NO
203.3097
103
1 303.3004

TITLE:	PARTIAL ELEVATOR PLAN
REFERENCE:	1 / A7.21
SCALE:	1/2" = 1'-0"
ISSUED FOR:	COP-002
DATE:	12.18.13

ASK-100
REVISED: DKS
DRAWN BY: EG



WOODLAND HIGH SCHOOL

1119.000

McGRANAHAN architects

TITLE: ELEVATOR DOOR JAMB DETAIL

REFERENCE: A7.21

SCALE: 3" = 1'-0"

ISSUED FOR: COP-002

DATE: 12.18.13

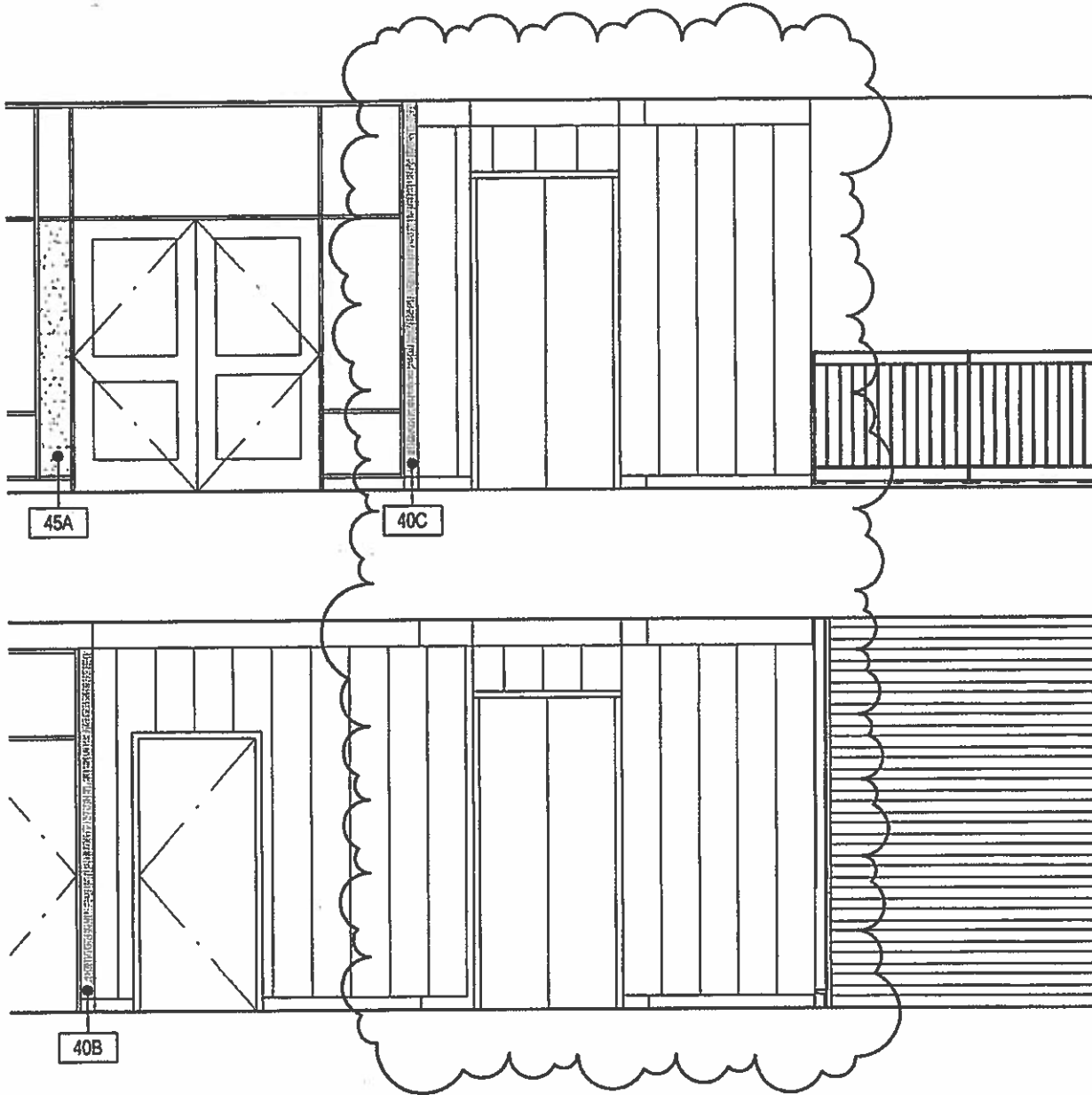
ASK-101

REVISED:

DRAWN BY: DKS

F 253 383 3077

T 253 383 3084



WOODLAND HIGH SCHOOL

1119.000

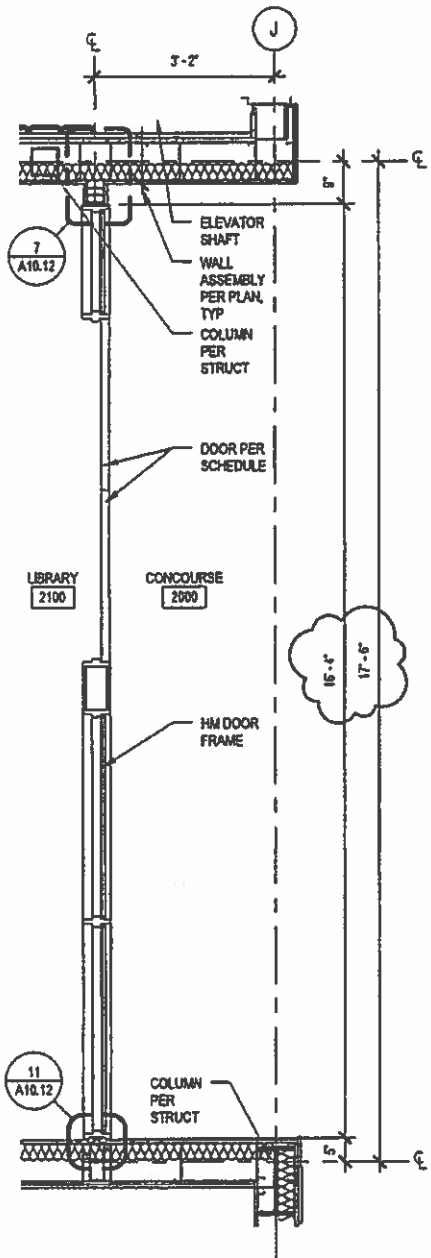
McGRANAHAN architects

TITLE: PARTIAL INTERIOR ELEVATION - CONCOURSE 1000/2000
 REFERENCE: 2 / A8.01
 SCALE: 1/4" = 1'-0"
 ISSUED FOR: COP-002
 DATE: 12.18.13

ASK-102

REVISED: DKS
 DRAWN BY: TMKR/DAS

253
 F 303 3097
 253
 T 303 3084



WOODLAND HIGH SCHOOL

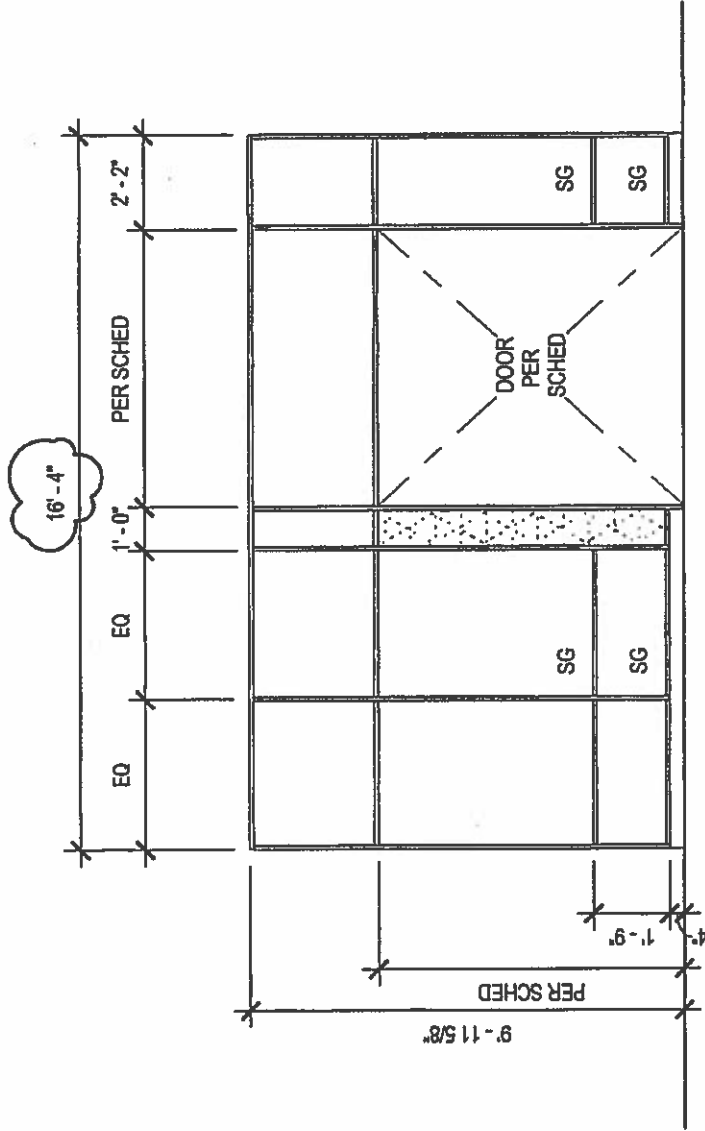
1119.000 McGRANAHAN ARCHITECTS

TITLE: ENLARGED PLAN
 REFERENCE: 13 / A10.11
 SCALE: 1/2" = 1'-0"
 ISSUED FOR: COP-002
 DATE: 12.18.13

ASK-103

REVISED: DKS
 DRAWN BY: DAS

200
 200 2007
 200
 200 2004

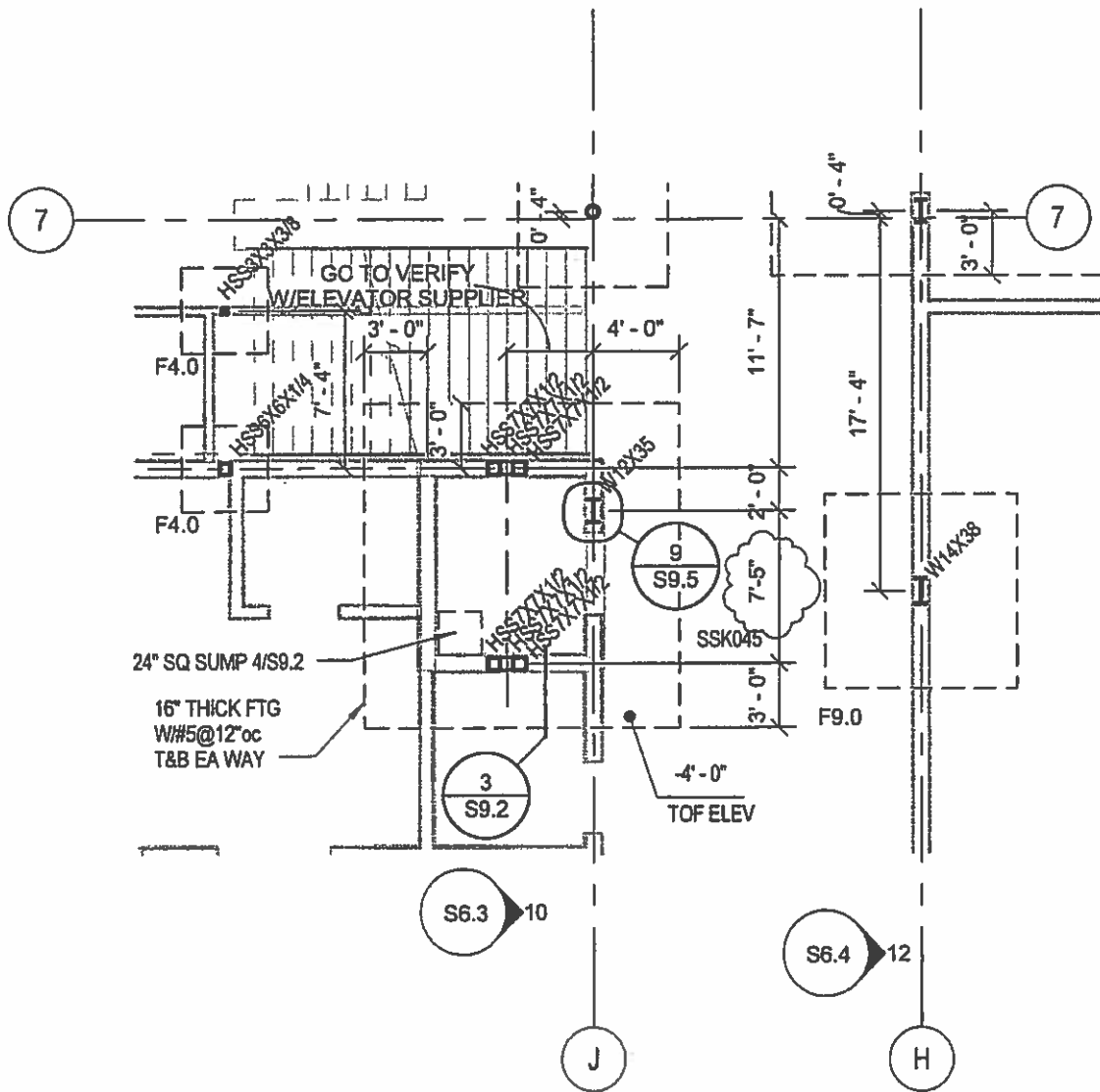


1119.000
 F 303 3097
 T 303 3084

WOODLAND HIGH SCHOOL
 McGRANAHAN architects

ASK-104

TITLE:	FRAME TYPES
REFERENCE:	A10.01
SCALE:	1/4" = 1'-0"
ISSUED FOR:	COP-002
DATE:	12.18.13
REVISED:	DKS
DRAWN BY:	DAS



WOODLAND HIGH SCHOOL

1119.000

McGRANAHAN architects

TITLE: PARTIAL FDN PLAN - CLASSRM - S

REFERENCE: S2.11

SCALE: 1/8" = 1'-0"

ISSUED FOR:

DATE: 12.20.13

SSK-045

REVISED: CCC

DRAWN BY: CCC

F 253 303 3077

T 253 303 3084

WESTERN PARTITIONS, INC.
Corporate Office

8300 SW Hunziker Road
Tigard, OR 97223
503-620-1600



WESTERN PARTITIONS, INC.

Change Order Request

Attn: Trevor Wyckoff

Project Woodland High School
Contractor Skanska
GC Job # 4113074-000
Reference #'s COP 002R1

WPI Job #: 14-04-9105
WPI COR #: 001R2
Prepared by: Dick Dixon
Date: 12/23/13

Description: COP 002R1 - Wall Assembly Changes at Elevator

Scope: The wall type at Elevator E1 is changed from a shaftwall assembly to a standard stud framed wall and a wall off-set furring condition is added at the perimeter of the elevator door frames. There is added labor for hanging sheetrock from a scaffold at the interior of the elevator shaft and added labor and materials for the off-set wall condition (shown by detail ASK-101).

Base Job

Labor	Quantity	UOM	Rate	Labor Hours	Hourly Rate	Total
01. Added Sheetrock Labor in the elevator shaft (performed from scaffolding)		hr		12.00	63.00	756.00
02. Furr Wall @ off-set door Jambs	2.00	ea	0.33	6.00	63.00	378.00
03. Added Sheetrock Labor @ off-set door jambs	2.00	ea	0.50	4.00	63.00	252.00
Category Total	4.00			22.00		1,386.00

Equipment

	Quantity	Price per Unit	Total
01. Scaffold Rent - Erection	1.00	600.00	600.00
02. Scaffold Rent - Monthly Rent	1.00	750.00	750.00
03. Scaffold Rent - Dismantle	1.00	600.00	600.00
Category Total	3.00		1,950.00

Material

	Quantity	Price per Unit	Total
01. Framing Materials - Furring @ door jambs	120.00	0.90	108.00
02. Sheetrock Materials - Extra GWB @ door jambs	64.00	0.45	28.80
03. Credit for shaftwall framing material (24" o.c.)	-600.00	0.95	-570.00
04. Add for standard framing material (16" o.c.)	900.00	0.65	585.00
05. Credit for shaftliner GWB (1")	-1,200.00	0.65	-780.00
06. Add for standard 5/8" Type X GWB	1,200.00	0.45	540.00
Category Total	484.00		-88.20

Base Job Total

\$3,247.80

Subtotal:	\$3,247.80
Home Office Overhead	\$0.00
Profit	\$487.17
Subcontract Overhead & Profit 10%	\$0.00
Gross Revenue Tax	\$0.00
Rounding	\$0.03

The pricing for this COR is valid for 30 days. WPI reserves the right to modify pricing if not accepted and processed into a modification to the contract within the specified period.

WESTERN PARTITIONS, INC.
Corporate Office

8300 SW Hunziker Road
Tigard, OR 97223
503-620-1600



WESTERN PARTITIONS, INC.

Change Order Request

Attr: Chris Durham
WVOJV

Total: \$3,735.00

Western Partitions, Inc.

The pricing for this COR is valid for 30 days. WPI reserves the right to modify pricing if not accepted and processed into a modification to the contract within the specified period.

2111 Pacific, Suite 100 Tacoma, Washington 98402

CHANGE ORDER PROPOSAL: 002R1

Woodland High School

Date: December 20th, 2013

To: Skanska

PROPOSED CONTRACT MODIFICATION:

Please submit an itemized proposal for changes in the Contract Time and Contract Sum for the following proposed modifications to the Contract Documents (This document is not a Change Order, Field Authorization or direction to proceed with the work described herein):

1. Change the elevator capacity from 3,500 lbs to 3,000 lbs.
2. Change the elevator shaft wall type from 50A1B to 34A1B.
2. Change the framing at the elevator jambs per the attached sketches.

Reference: A2.11; A2.21; A7.21; S2.11; Section 14 20 10

Attachments: ASK-098, ASK-0 99, ASK-100, ASK-101, ASK-102, ASK-103, ASK-104 and SSK-045

PROPOSED CONTRACT ADJUSTMENTS:

The proposed change to the Contract Sum or Guaranteed Maximum Price for all work described above is:

- (increase) (decrease) of: \$ 1,077,00 (Washington State Sales Tax not included) or,
- The Contract Sum shall remain unchanged.

The proposed change to the Contract Time for all work described above is:

- (increase) (decrease) of _____ days or;
- The Contract Time will remain unchanged.

The foregoing amount includes all direct and indirect costs for material, labor and supplies related to this change and to the effect of this change on the remainder of the Project. All other provisions of the Contract remain in full force and effect. The Contractor agrees to be bound by this proposal for ninety (90) days after this date.

Submitted by: [Signature]
General Contractor

Date: 11.23.13

We have examined the foregoing proposal, negotiated with the Contractor where necessary, and find it to be reasonable.

Approved By: _____
McGranahan Architects

Date: _____

The Owner hereby accepts the foregoing proposal. This document when fully signed constitutes the conditions upon which a Change Order will be issued.

Accepted By: _____
Woodland School District No. 404

Date: _____